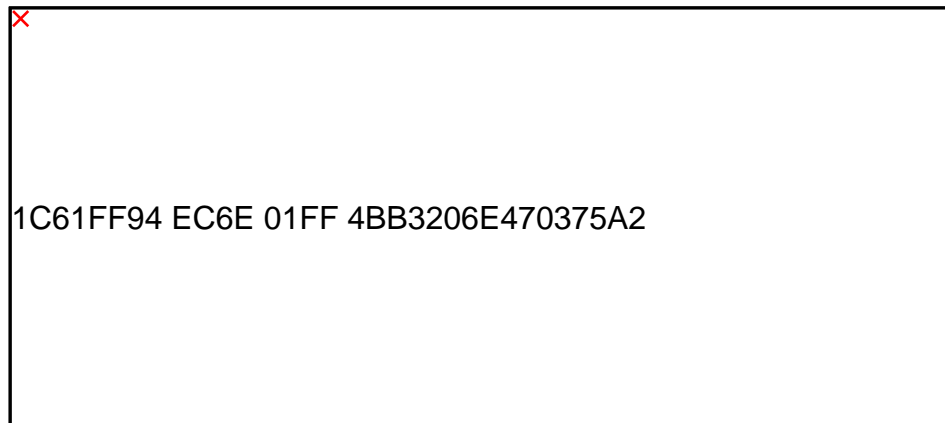




STAINLESS STEEL GASTRO GUIDEWIRE

Used to facilitate the placement of instruments during diagnostic or treatment procedures. Supplied sterile in a peel open Tyvek pouch. For single use only.



Key features:

- Specially designed Flexible atraumatic tip
- Radiopaque distal and proximal markers
- Progressive dilation
- Smooth surface finish

Specifications

Size

Diameter 2 mm

Length 250 cm